



**IRIS**  
**PLAZA**  
Gudianali, Dhenkanal

*Your Dream Home at your Doorstep*



**IRIS INFRACON PVT. LTD.**

**Head Office**

B-12(SCR), I.D. Market, IRC Village,  
Nayapalli, Bhubaneswar.

Phone - 0674-2552277

e-mail - [info@irisinfracon.com](mailto:info@irisinfracon.com)

website - [irisinfracon.com](http://irisinfracon.com)

**Branch Office**

AT - Kathagada, Near College By-pass.

Mobile - 9438815988, 9090303021



## About IRIS Infracon Pvt. Ltd.

**IRIS Infracon Private Limited.** emerged as one of the fastest growing company in Orissa and had a diverse portfolio with interest in Real Estate.

Your fear of losing something means your hard earning, the insecurity of getting the right booked one, uncertain of future(time) etc. , is well being taken care. So let's not feel as if you left open something in IRIS. Giving best customized quality project, in time possession, with all transparent benefits, keeps us happy going. Just be a part of it. In IRIS your dream for the future settlement will be settled easily. So give a chance to serve you as better as possible. Some of the reasons why all our projects have met with immense success include ideal locations, impeccable quality of construction, awesome amenities and reasonable prices. Add to this the dedication of the work force and the determination of the management and, you get a property that's almost like made-to-order - simply perfect & fit to pocket!

Unique in terms of planning, design, quality, workmanship, transparency, customer delight and service. We are absolutely and completely conscious of quality of construction and take utmost care so that only the best of construction materials are used. Your dream is our vision and strategy. IRIS is involved in constructing high quality project at competitive rates.

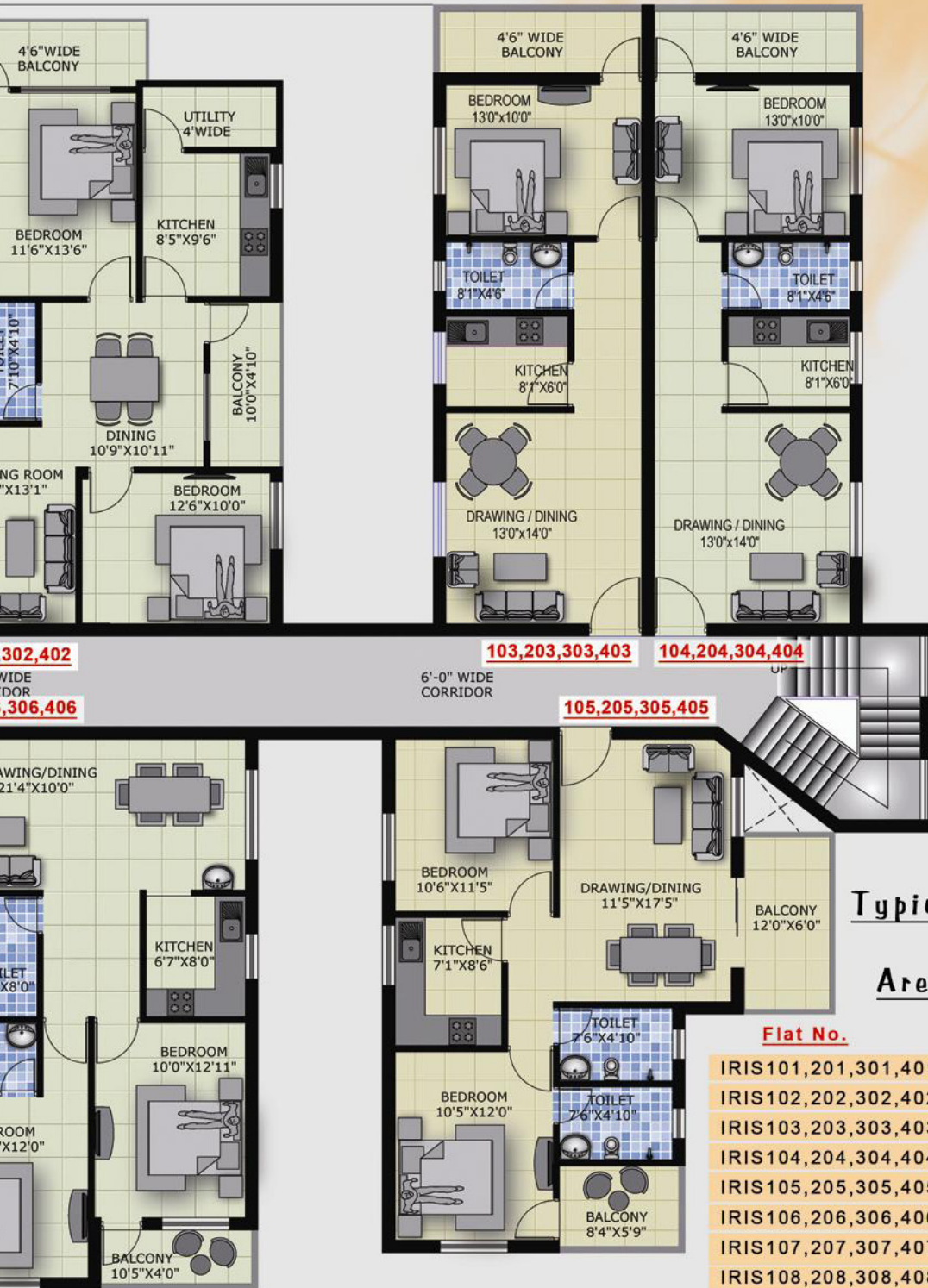


**IRIS PLAZA is a S+4 Storied Residential Apartment, well located in an ecofriendly environment very closed to all Hitech areas, Institutional areas,Heart of the town and residential area. The apartment is well planned with all modern facilities.**

**With IRIS INFRACON PVT.LTD. you are secure.**

***Your Dream Home at your Doorstep...***





**Typical Floor Plan  
With  
Area Statement**

<b>Flat No.</b>	<b>Flat Type</b>	<b>SBUA</b>
IRIS101,201,301,401	2 BHK	1209 Sq.ft.
IRIS102,202,302,402	2 BHK	1209 Sq.ft.
IRIS103,203,303,403	1 BHK	768 Sq.ft.
IRIS104,204,304,404	1 BHK	768 Sq.ft.
IRIS105,205,305,405	2 BHK	1105 Sq.ft.
IRIS106,206,306,406	2 BHK	1063 Sq.ft.
IRIS107,207,307,407	2 BHK	1063 Sq.ft.
IRIS108,208,308,408	2 BHK	1088 Sq.ft.
IRIS109,209,309,409	2 BHK	1180 Sq.ft.
IRIS110,210,310,410	2 BHK	1236 Sq.ft.
IRIS111,211,311,411	2 BHK	1085 Sq.ft.

## Specification

### • Structure

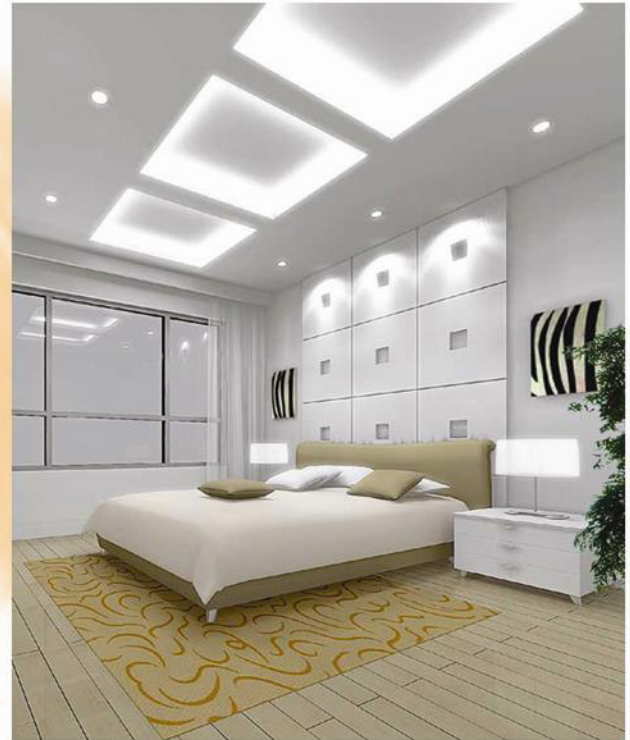
Earthquake resistant RCC Framed structure  
With Fly-ash/Concrete brick wall.

### • Flooring

Rooms – Vitrified tiles.  
Kitchen – Polished bull-nosed granite.  
Toilet – Anti skid ceramic tile.  
Common area – Vitrified tile.

### • Doors And Window

Main door – Teak wood polished with mortise  
Lock and eye piece.  
Inner doors – Flush doors  
Door frames – Sal or non-sal wood  
Windows – Powder coated aluminum frame  
with sliding typed glass & protected with MS  
grill.  
Toilet – Water proof PVC Door



### • Electrical

Modular Electrical Switches.  
TV point in drawing and master bedroom.  
Provision for AC in one bed room (Split).

### • Toilets

CP fittings of jaguar/ Marc or equivalent.  
Designer tiles on walls upto 7' ft height.  
Provision for exhaust fan.

### • Kitchen

Cooking platform with granite top.  
Stainless steel sink.  
Designer tile upto 3' above the platform.  
Provision for exhaust fan.

### • Wall finishes

Internal – Putty with one coat of white  
primer.  
External – Weather coat paint.

## Facilities

24 hour water supply from deep bore well/P.H. supply through over head tank.  
Stand by Generator for all common area, Boring point & Lift.  
Society office.  
24 Hr. Securities.  
Intercom facilities.

## Payment Schedule

Installments	Percentage
On Booking	10%
Agreement	10%
1st installment on foundation	10%
2nd installment on plinth	10%
3rd installment on completion of 1st roof casting of Stilt floor	10%
4th – Installment on completion of first floor roof casting	10%
5th Installment on completion of Second floor roof casting	10%
6th – Installment on completion of Third floor roof casting	10%
7th – Installment on completion of Brick Work of Allotted Flat	10%
8th Installment on completion of finishing work and handed over & sale deed of the allotted flat	10%

## Completed Project



S + 4 residential apartment at Malipada, near Sum Hospital, Bhubaneswar.

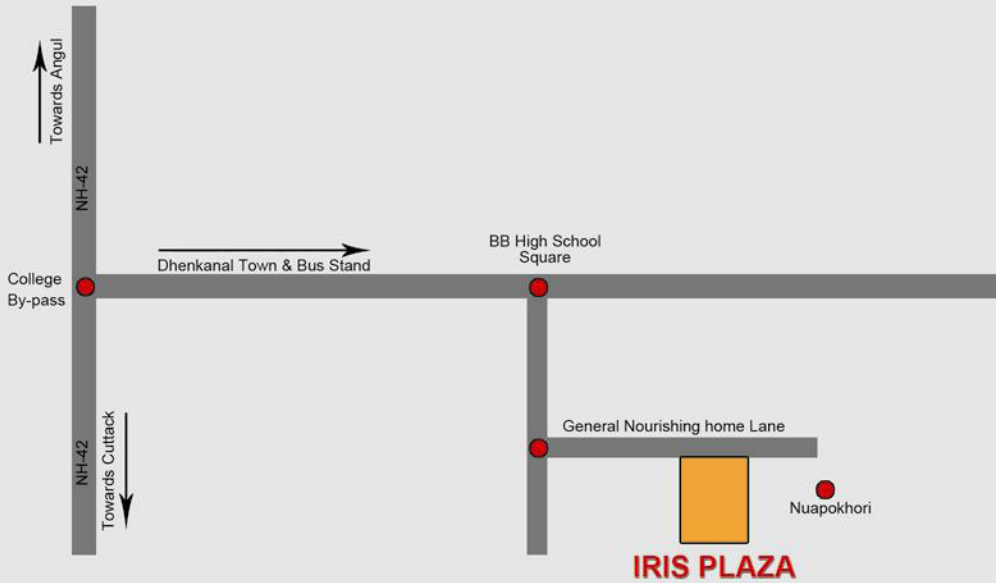


S + 4 residential apartment at Patia, Bhubaneswar.

## Up-coming Project

Residential Apartment at Amalapada, Barapada (Dhenkanal), Angul & Nakhara, Bhubaneswar.  
Duplex Project at Cuttack, Jagannathpur (Near EAST College) Bhubaneswar.  
Mega Commercial Project at Jharapada.  
Plotting project at Dhenkanal.

## Location Map



Not to scale

## Distance

Bus Stand - 0.5 Km., Hospital - 1.5 Km., BB High school - 0.2 km.,  
College - 1.5 Km., NH-42 - 2 Km., collectorate - 0.5 Km.

## Supported by

